



COMMONWEALTH OF KENTUCKY
TRANSPORTATION CABINET

www.transportation.ky.gov/

Andy Beshear
GOVERNOR

Jim Gray
SECRETARY

May 7, 2021

CALL NO. 402
CONTRACT ID NO. 212603
ADDENDUM # 1

Subject: Jefferson County, 056GR21M056-FJ11
Letting May 21, 2021

- (1) Revised - Delete Pages 9-11 of 66
- (2) Revised - Special Note for Contract Completion Date and Liquidated Damages on Bridge Repair Contract - Page 15 of 66
- (3) Revised - Title Sheet - Page 18 of 66
- (4) Revised - Quantities Sheet - Page 19 of 66
- (5) Revised - General Notes Sheet - Page 21 of 66
- (6) Revised - Pier Column Concrete Repair Sheet - Page 22 of 66
- (7) Revised - Maintenance of Traffic General Notes Sheet - Page 55 of 66
- (8) Revised - Material Summary - Pages 16-17 of 66
- (9) Revised - Proposal Bid Items - Page 66 of 66

Proposal revisions are available at <http://transportation.ky.gov/Construction-Procurement/>.

If you have any questions, please contact us at 502-564-3500.

Sincerely,

Rachel Mills,

A handwritten signature in black ink that reads "Rachel Mills".

Rachel Mills, P.E.
Director
Division of Construction Procurement

RM:mr
Enclosures

SPECIAL NOTE FOR CONTRACT COMPLETION DATE AND LIQUIDATED DAMAGES ON BRIDGE REPAIR CONTRACT

I. COMPLETION DATE. The Contractor has the option of selecting the starting date for this Contract. Once selected, notify the Department in writing of the date selected at least two weeks prior to beginning work. All work is to be completed by April 30, 2022.

II. LIQUIDATED DAMAGES. Liquidated damages will be assessed the Contractor in accordance with the Standard Specifications, Section 108.09, when the April 30, 2022 date is exceeded. Contrary to the Standard Specifications, liquidated damages will be assessed to the Contractor during the months of December, January, February and March when the contract time has expired. Contract time will be charged during these months.

All construction must be completed in accordance with the weather limitations specified in Section 601 as applicable. No extension of Contract time will be granted due to inclement weather or temperature limitations that occur due to starting work on the Contract or a structure late in the construction season.

In addition to the project liquidated damages as specified in Section 108.09 of the Department of Highway's 2019 Standard Specifications for Road and Bridge Construction, if the Contractor fails to reopen the I-64 weeknight lane closure to traffic by the deadlines specified in the Maintenance of Traffic General Notes, the Contractor will be assessed liquidated damages of \$1000.00 for the first half hour and \$5,000.00 for each additional hour that the lane closure is in effect.

DECK DRAINAGE SYSTEM REMOVAL

REMOVE AND PROPERLY DISPOSE OF EXISTING UNDERDECK COLLECTION AND DISCHARGE SYSTEMS, INCLUDING, BUT NOT LIMITED TO, PIPES, TROUGH, DOWNSPOUTS AND MISCELLANEOUS COMPONENTS AND ATTACHMENTS ASSOCIATED WITH THE DRAINAGE SYSTEM.

ALL STEEL THAT IS REMOVED AND NOT REUSED IN THE COMPLETED STRUCTURE SHALL BECOME THE PROPERTY OF THE CONTRACTOR AND SHALL BE REMOVED FROM THE BRIDGE SITE.

EXISTING DRAINAGE COMPONENTS TO BE INCORPORATED WITH THE NEW DRAINAGE SYSTEM SHALL BE APPROVED BY THE ENGINEER.

ALL REMOVED WELDED CONNECTIONS TO BE GROUND SMOOTH.
ALL LABOR EQUIPMENT AND INCIDENTALS TO REMOVE THE DRAINAGE SYSTEM IS INCLUDED IN THE BID ITEM REMOVE "DRAINAGE".

CONTRACTOR'S SUBMITTALS

WHERE REQUIRED BY THE PLANS AND SPECIFICATIONS, SUBMIT DESCRIPTIVE INFORMATION THAT WILL ENABLE THE ENGINEER TO DETERMINE WHETHER PROPOSED MATERIALS, EQUIPMENT, AND WORK METHODS ARE IN GENERAL CONFORMANCE WITH THE PLANS.
SUBMIT SEQUENCES, TECHNIQUES AND PROCEDURES OF CONSTRUCTION INCLUDING, BUT NOT LIMITED TO, MATERIALS, TEMPORARY STRUCTURES, TOOLS, CONSTRUCTION EQUIPMENT, AND ALL INCIDENTAL OR TEMPORARY DEVICES REQUIRED TO ACCOMPLISH THE RESULT INTENDED BY THIS CONTRACT.

RESIDUAL LEAD PAINT

RESIDUAL LEAD PAINT MAY STILL BE ON THE BRIDGES. THE CONTRACTOR IS ADVISED TO TAKE ALL NECESSARY PROTECTIVE MEASURES INCLUDING WORKER SAFETY AND ENVIRONMENTAL REGULATIONS WHEN PERFORMING SURFACE PREPARATION AND OTHER WORK. THE DEPARTMENT WILL NOT CONSIDER ANY CLAIMS BASED ON RESIDUAL LEAD PAINT.

FIBERGLASS DRAIN PIPE

FIBERGLASS PIPE AND FITTINGS SHALL BE REINFORCED THERMOSETTING RESIN PIPE (RTRP) SYSTEMS MEETING THE REQUIREMENTS OF ASTM D2936 WITH AT LEAST 30,000 PSI SHORT TIME RUPTURE STRENGTH HOOPS TENSILE STRESS, AND THE ACCELERATED UV WEATHERING PERFORMANCE REQUIREMENTS OF ASTM D54.

ADHESIVE BONDED SOCKET JOINTS ARE ACCEPTABLE FOR ALL CONNECTIONS OF FIBERGLASS PIPES AND FITTINGS. USE THE SAME TYPE OF RESIN AND BONDING FITTINGS AND ADHESIVE. PROVIDE ALL FIBERGLASS PIPE, FITTINGS AND BONDING ADHESIVES FROM SAME MANUFACTURER.

PIGMENT ALL FIBERGLASS PIPE AND FITTINGS TO MATCH THE COLOR OF THE EXISTING STRUCTURAL STEEL UNLESS OTHERWISE SPECIFIED. PAINT, GEL-COAT OR ANY OTHER EXTERIOR COATING WILL NOT BE ACCEPTED FOR THE COLORING OF NEW PIPE AND FITTINGS.

RIGID CONNECTIONS BETWEEN PIPING SYSTEMS AND ROADWAY DRAIN SCUPPERS WILL NOT BE ACCEPTED. MAKE THE DECK OUTLET CONNECTION WITH A FREE FLOATING COLLECTOR ASSEMBLY SIZED 4 INCHES LARGER THAN THE OUTLET PIPE. INCLUDE AN OVERSIZED FIBERGLASS SPLASH GUARD AT EACH COLLECTOR UNIT ASSEMBLY.

SUPPORT RUNS OF PIPE AT SPACING NO GREATER THAN THE LESSER OF THOSE RECOMMENDED BY THE MANUFACTURER OF THE PIPE OR 20 FT. MAXIMUM. DRAINAGE UNDER DECK RUNS OF PIPE SHALL BE SUPPORTED BY STIFFENER PIPE HANGERS COMPRISED OF PIPE SUPPORT HARDWARE ATTACHED TO A BRACKET BOLTED TO THE GIRDER STIFFENER. BRACKET PLATES TO BE MINIMUM 3/8 INCH BOLT IS TO BE 3/4 INCH THICK. DRILL HOLES AS NECESSARY. SUBMIT PROPOSED DETAILS OF ANY PIPE SUPPORT FIELD HARDWARE OR ATTACHMENT TO THE EXISTING STEEL THAT DIFFERS FROM THOSE SPECIFIED FOR REVIEW TO THE ENGINEER PRIOR TO FABRICATION.

AVOID SUPPORTS THAT HAVE POINT CONTACT OR NARROW SUPPORTING AREAS. STANDARD SING, CLAMP OR CLEVIS HANGERS AS TYPICALLY USED FOR STEEL APPLICATIONS MAY BE USED. STRAP WIDTH TO BE 1 1/2 INCH. HANGER THICKNESS TO BE 3/16 INCH.

PROVIDE SUPPORTS THAT HAVE 120 DEGREES OF CONTACT WITH THE PIPE. IF SUPPORTS ARE USED TO SUPPORT THE PIPE, THE CONTACT POINTS OF THE PIPE SHALL BE EQUAL PIPE DIAMETER.

ALL CLEANOUTS MUST BE CONVENIENTLY ARRANGED AND EASILY ACCESSIBLE SO THE MAINTENANCE CREW CAN GET TO THEM TO REMOVE OBSTRUCTIONS.

HANDLE AND INSTALL ALL FIBERGLASS PIPE AND FITTINGS ACCORDING TO THE GUIDELINES AND PROCEDURES RECOMMENDED IN THE PRINTED LITERATURE OF THE MANUFACTURER.

INSTALL PIPE TO THE MINIMUM SLOPE SHOWN IN THE PLANS. THE SLOPE MAY BE ADJUSTED WHERE NECESSARY TO ADAPT TO THE EXISTING STRUCTURE, BUT MAY NOT BE LESS THAN THE MINIMUM SLOPE DESIGNATED IN THE PLANS.

WELDED CONNECTIONS WILL NOT BE ALLOWED.

PIPE HANGERS SUSPENDED FROM THE CONCRETE DECK WILL NOT BE ALLOWED, OR APPROVED EQUAL.

PIPE CLAMP SHALL BE ANVIL INTERNATIONAL GALVANIZED OFFSET PIPE CLAMP FIG 103 OR APPROVED EQUAL.

FASTEN PIPE CLAMPS TO CONCRETE COLUMNS USING 5/8 INCH ALL THREAD ROD ADHESIVE ANCHORS. FIELD DRILL THE HOLE DIAMETER AND DEPTH IN ACCORDANCE WITH THE EPOXY ADHESIVE MANUFACTURER RECOMMENDATIONS. PROVIDE WASHER AND HEAVY HEX NUT AT EACH ALL THREAD ROD. PIPE CLAMPS AND ASSOCIATED FASTENER HARDWARE SHALL BE GALVANIZED AFTER FABRICATION.

SUBMIT MANUFACTURER'S SPECIFICATIONS AND/OR CATALOG DATA LISTING FOR PIPE, FITTINGS, AND ALL OTHER COMPONENTS OF THE SYSTEM.

SUBMIT MANUFACTURER'S INSTRUCTIONS FOR INSTALLATION OF ALL PIPE, FITTINGS, AND ATTACHMENT HARDWARE UTILIZED.

CERTIFY THE ADHESIVE FORMULATION TO BE PROVEN SUITABLE FOR THE INTENDED APPLICATION.

THE DRAINAGE PIPE LAYOUT DETAILS SHOWN IN THE PLANS ARE TYPICAL OF DRAINAGE PIPE LAYOUTS. COMPLETE THE CONSTRUCTION OF THE DRAINAGE SYSTEM TO COLLECT AND DISPOSE OF WATER FROM DRAIN INLETS ON THE BRIDGE STRUCTURES. SUBMIT DETAILED SHOP DRAWINGS OF THE DRAINAGE SYSTEM FOR REVIEW BY THE ENGINEER IF DIFFERENT FROM DETAILS IN THE PLANS.

PAYMENT FOR THE COMPLETED AND ACCEPTED QUANTITY FOR FIBERGLASS DRAIN PIPE INSTALLED IN THE COMPLETED STRUCTURE WILL BE CONSIDERED AS FULL COMPENSATION FOR ALL WORK REQUIRED TO INSTALL FIBERGLASS PIPE, FITTINGS, JOINTS, PIPE SUPPORTS, ASSOCIATED HARDWARE, AND INCIDENTALS FOR THE APPROPRIATE PIPE SIZE.

PROTECTION OF VEHICLES AND PEDESTRIANS

NO WORK WILL BE ALLOWED OVER MOVING TRAFFIC OR PEDESTRIAN ACCESSIBLE AREAS WITHOUT ALL NECESSARY PRECAUTIONS TO PROTECT VEHICLES, WHETHER MOVING OR PARKED, AND INDIVIDUALS FROM DAMAGE AND HARM CAUSED BY FALLING DEBRIS OR OTHER OBJECTS RESULTING FROM THE WORK. THE CONTRACTOR SHALL BE FULLY RESPONSIBLE FOR ALL ACTIONS IN ACCORDANCE WITH SECTION 107 OF THE STANDARD SPECIFICATIONS.

PRIOR TO DEMOLITION OF ANY PORTIONS OF THE EXISTING STRUCTURE, THE CONTRACTOR SHALL SUBMIT PLANS FOR THE PROTECTION OF TRAFFIC (VEHICULAR, BICYCLIST, PEDESTRIAN, ETC.) ADJACENT TO AND/OR UNDER THE STRUCTURE TO THE ENGINEER FOR APPROVAL.

DRAINAGE SYSTEM FIELD TESTING

PRIOR TO THE ACCEPTANCE OF THE STRUCTURE BY THE DEPARTMENT, THE DRAINAGE SYSTEM SHALL BE FLUSHED OUT AND TESTED BY THE CONTRACTOR. TO ENSURE THAT IT IS UNOBSTRUCTED AND DOES NOT LEAK, THIS SHALL BE ACCOMPLISHED BY WATER UNDER PRESSURE. THE CONTRACTOR SHALL BE RESPONSIBLE FOR PROVIDING WATER UNDER PRESSURE TO THE PRESSURE TESTING SYSTEM. THE CONTRACTOR SHALL PREVENTING THE FREE FLOW OF DRAINAGE SHALL BE REMOVED TO THE COMPLETE SATISFACTION OF THE ENGINEER.

INCLUDE THE COST OF ALL LABOR, EQUIPMENT AND INCIDENTALS TO COMPLETE THE DRAIN PIPE SIZE OF THE BID ITEM FOR THE APPROPRIATE FIBERGLASS DRAIN PIPE SIZE OF THE WORK INVOLVED.

CLEAN DRAINS

THIS ITEM OF WORK CONSISTS OF COMPLETELY CLEANING ALL DEBRIS, INCLUDING SOIL DEPOSITS, VEGETATION, AND TRASH, FROM ALL EXISTING DECK DRAINS. THE DEBRIS MAY BE FLUSHED THROUGH THE EXISTING DRAINAGE SYSTEM; HOWEVER, THE CONTRACTOR SHALL BE RESPONSIBLE FOR REMOVING ALL DEBRIS FROM THE SYSTEM TO COMPLETELY DISPOSED. THIS WORKER THE ENGINEER MAY DIRECT THE CONTRACTOR TO REMOVE THE DRAIN GRATING IF COMPLETE CLEANING CANNOT BE ACHIEVED BY FLUSHING. THE CONTRACTOR SHALL REMOVE AND DISPOSE OF ANY DEBRIS THAT FALLS ON THE BRIDGE DECK AND/OR THE GROUND BELOW DURING CLEANING OPERATIONS. CLEANING SHALL BE DONE BEFORE INSTALLING THE NEW DRAIN GRATING. DEBRIS DISPOSAL TOOLS AND INCIDENTALS TO COMPLETE THE WORK TO BE INCLUDED IN THE BID ITEM "REMOVE-DRAINAGE".

CLEAN UNDERGROUND PIPING

WHERE UNDERGROUND PIPING EXISTS FOR BRIDGE #142, COMPLETELY CLEAN ALL DEBRIS, ETC. FROM THE NEW PIPE COUPLING TO THE NEAREST MANHOLE OR PIPE TEE. THE CONTRACTOR SHALL BE RESPONSIBLE FOR PROVIDING EQUIPMENT TO BE CLEANED UP TO THE UNDERGROUND PIPING EQUIPMENT. THE CONTRACTOR SHALL BE FULLY RESPONSIBLE FOR ALL ACTIONS IN ACCORDANCE WITH SECTION 107 OF THE STANDARD SPECIFICATIONS. INCLUDE IN THE BID ITEM "REMOVE-DRAINAGE".

PROPOSAL REVISION	05/05/21
DATE	MARCH 2021
DESIGNED BY	MJD
DETAILED BY	MJD
CHECKED BY	
REVISION	
Commonwealth of Kentucky	
DEPARTMENT OF HIGHWAYS	
JEFFERSON COUNTY	
ROUTE 1-64	
K & I T RR TO PRESTON STREET	
GENERAL NOTES - 2	
ISSUED BY	
Michael Baker	
INTERNATIONAL	
28	

ITEM NUMBER	5-10015
-------------	---------

**3RD TO PRESTON ST
COLUMN RETROFIT**

PIER	COLUMN	D	AREA(•) (SQ. FT.)
109	NORTH	4'-0"	50
115	NORTH	4'-6"	30
116	MIDDLE	4'-6"	30
119	MIDDLE	4'-6"	30
123W	NORTH	4'-0"	50
123W	SOUTH	4'-0"	15
124E	MIDDLE	4'-0"	10
124E	SOUTH	4'-0"	5
127W	MIDDLE	4'-0"	50
128E	NORTH	4'-0"	35
128E	MIDDLE	4'-0"	10
130W	NORTH	4'-0"	305
130W	SOUTH	4'-0"	55

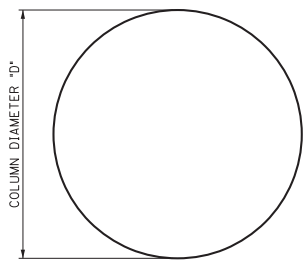


(•) THE CONCRETE DETERIORATION IS USUALLY WITHIN THE TOP 5 FEET OF THE COLUMN. THE CONTRACTOR SHALL BE RESPONSIBLE FOR SEVERE DETERIORATION. THE CONTRACTOR IS RESPONSIBLE FOR MAKING A SITE VISIT TO BECOME FAMILIAR WITH THE WORK (SEE GENERAL NOTE).

THE ESTIMATED SQUARE FOOTAGE OF CONCRETE TO BE PATCHED OR REPLACED DECREASE BASED ON THE COMPLETED AND ACCEPTED QUANTITIES.

THE CONCRETE PATCHING AREA COVERS REMOVAL AND SURFACE RESTORATION COLUMN CONCRETE REPAIRS.

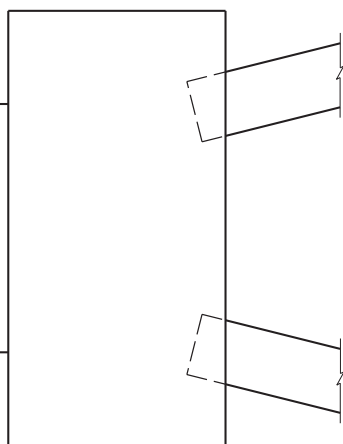
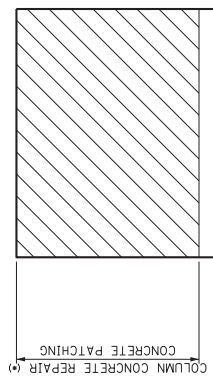
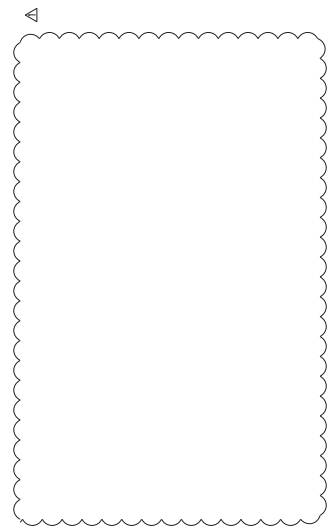
LEGEND



SECTION A-A

COLUMN CONCRETE REPAIR

- REPAIR DELAMINATED OR SPALLED AREAS OF COLUMN AS APPLICABLE IN ACCORDANCE WITH SPECIAL NOTE FOR CONCRETE PATCHING USING EPOXY MORTAR OR CLASS "W" CONCRETE.
- COORDINATE THE DOWNSPOUT REMOVAL AND/OR REPLACEMENT WITH THE PIER COLUMN CONCRETE REPAIR WORK.
- SOUND THE COLUMN AND MARK THE LIMITS OF DELAMINATED AREAS FOR REPAIR WORK IN THE PRESENCE OF THE ENGINEER. SQUARE OFF IRREGULAR SHAPES TO HELP MAKE A MORE DURABLE REPAIR. MAKE 1-INCH SAMCUTS IN THE SOUND CONCRETE ALONG THE PERIMETER OF THE REPAIR AREA, UNDERCUT THE EDGE OF A CUT-OUT AREA IF NECESSARY TO RETAIN THE NEW MATERIAL.
- DO NOT DAMAGE AREAS OF SOUND CONCRETE OR REINFORCING STEEL. PROTECT EXISTING REINFORCING STEEL ENCOUNTERED DURING CONCRETE REMOVAL. REMOVE RUST AND OTHER HARMFUL MATERIALS FROM ALL CORRODED STEEL EXPOSED. REMOVE AND REPLACE REINFORCING STEEL PERMITTING FOR LOSS OF NEARLY 20 PERCENT TENSILE STRENGTH. INCREASE THE CROSS-SECTIONAL SIZE OF THE NEW REINFORCING STEEL BAR TO THE EXISTING STEEL BAR.



COLUMN ELEVATION

ITEM NUMBER	5-10015
-------------	---------

DESIGNED BY: **Michael Baker**
INTERNATIONAL

DATE: 05/05/21
SHEET NO: 28

PROPOSED REVISION: 05/05/21

DATE: MARCH 2021
DESIGNED BY: DMB
CHECKED BY: MJB
DETAILED BY: MJD

State of **Kentucky**
Department of **Highways**

PROJECT: **JEFFERSON**
ORDERING: **K & I TT RR TO PRESTON STREET**

ROUTE: **I-64**
PROJECT: **PIER COLUMN CONCRETE REPAIR**

PREPARED BY: **Michael Baker International**

SHEET NO.	5-10015
COUNTY OF	JEFFERSON
ITEM NO.	5-10015

DATE PLOTTED: September 7, 2005	USER: Minda-Mason
FILE NAME: D:\MONTNOTES.DGN	
DATE PLOTTED: September 7, 2005	USER: Minda-Mason
FILE NAME: D:\MONTNOTES.DGN	

GENERAL NOTES
TRAFFIC CONTROL

1. TRAFFIC SHALL BE MAINTAINED IN ACCORDANCE WITH THESE PLANS, THE MANUAL ON UNIFORM TRAFFIC CONTROL DEVICES, THE STANDARD SPECIFICATIONS FOR ROAD AND BRIDGE CONSTRUCTION AND THE STANDARD DRAWINGS, CURRENT EDITIONS. THE CONTRACTOR WILL BE RESPONSIBLE FOR DEVELOPING AND IMPLEMENTING THE MAINTENANCE OF TRAFFIC DETAILS WITH GUIDANCE THROUGH STANDARD DRAWINGS AND THE MUTCD CURRENT EDITIONS. THE DEVELOPED TRAFFIC CONTROL PLAN MUST BE APPROVED BY THE ENGINEER PRIOR TO IMPLEMENTATION.
2. ALL ITEMS OF WORK NECESSARY TO MAINTAIN AND CONTROL TRAFFIC WILL BE PAID AT THE LUMP SUM BID PRICE TO MAINTAIN AND CONTROL TRAFFIC AS SET FORTH IN THE CURRENT STANDARD SPECIFICATIONS FOR ROAD AND BRIDGE CONSTRUCTION UNLESS OTHERWISE PROVIDED FOR IN THESE NOTES. THE LUMP SUM BID TO MAINTAIN AND CONTROL TRAFFIC SHALL BE PER STANDARD SPECIFICATION SECTION 112.04.01.
3. ANY TEMPORARY TRAFFIC CONTROL ITEMS, DEVICES, MATERIALS AND INCIDENTALS SHALL REMAIN THE PROPERTY OF THE CONTRACTOR WHEN NO LONGER NEEDED.
4. THE CONTRACTOR SHALL MAINTAIN A TRAVELED WAY MINIMUM LANE WIDTH OF 12 FEET OR AS NOTED IN THE MAINTENANCE OF TRAFFIC PLANS.
5. THE CONTRACTOR SHALL COMPLETELY COVER ANY SIGNS, EITHER EXISTING, PERMANENT OR TEMPORARY, WHICH DO NOT PROPERLY APPLY TO THE CURRENT TRAFFIC PHASING AND SHALL MAINTAIN THE COVERING UNTIL THE SIGNS ARE APPLICABLE OR ARE REMOVED.
6. IN GENERAL, ALL TRAFFIC CONTROL DEVICES SHALL BE PLACED STARTING AND PROCEEDING IN THE DIRECTION OF THE FLOW OF TRAFFIC AND REMOVED STARTING AND PROCEEDING IN THE DIRECTION OPPOSITE THE FLOW OF TRAFFIC.
7. THE ENGINEER AND THE CONTRACTOR, OR THEIR AUTHORIZED REPRESENTATIVES, SHALL REVIEW THE STAGING PLANS BEFORE TRAFFIC IS ALLOWED TO USE ANY LANE CLOSURES, CROSSOVERS OR DETOURS. ALL STAGING SHALL BE APPROVED BY THE ENGINEER BEFORE WORK CAN BE STARTED BY THE CONTRACTOR.
8. IF THE CONTRACTOR DESIRES TO DEVIATE FROM THE TRAFFIC CONTROL SCHEME OUTLINED IN THESE PLANS AND THIS PROPOSAL, THEY SHALL PREPARE AN ALTERNATE PLAN AND PRESENT IT IN WRITING TO THE ENGINEER. THIS ALTERNATE PLAN CAN BE USED ONLY AFTER REVIEW AND APPROVAL OF THE DIVISIONS OF TRAFFIC, DESIGN AND CONSTRUCTION, AND THE FEDERAL HIGHWAY ADMINISTRATION, WHERE APPLICABLE.
9. IF TRAFFIC SHOULD BE STOPPED DUE TO CONSTRUCTION OPERATIONS AND AN EMERGENCY VEHICLE OR AN OFFICIAL EMERGENCY RESPONDER ARRIVES AT THE SCENE, THE CONTRACTOR SHALL MAKE THE PROVISIONS FOR THE PASSAGE OF THAT VEHICLE AS QUICKLY AS POSSIBLE.
10. ALL SIGNS NECESSARY FOR A MARKED DETOUR WILL BE PROVIDED BY THE CONTRACTOR AS REQUIRED BY STANDARD DRAWINGS AND THE MUTCD.
11. REASONABLE MEANS OF INGRESS AND EGRESS SHALL BE MAINTAINED TO ALL PROPERTIES WITHIN THE PROJECT LIMITS AT ALL TIMES.
12. ACCESS TO FIRE HYDRANTS SHALL BE MAINTAINED AT ALL TIMES.
13. CONTRACTOR, IN ACCORDANCE WITH THE ENGINEER, WILL NOTIFY AFFECTED PROPERTY OWNERS, INCLUDING AIRSPACE LESSEES, A MINIMUM OF 48 HOURS PRIOR TO ANY WORK THAT MAY IMPACT THEM. FOR EXAMPLE, PARKING LOTS AND BUILDINGS ADJACENT TO THE PROJECT AREA. HOWEVER, NOTIFICATION TO WATERFRONT PARK SHALL BE MADE ONE WEEK PRIOR TO BEGINNING WORK.
14. CONTRACTOR SHALL COORDINATE WITH TRIMARC AS NEEDED FOR THE USE OF THE EXISTING VARIABLE MESSAGE SIGNS.
15. THERE ARE NUMEROUS EVENTS AND ACTIVITIES THAT OCCUR WITHIN WATERFRONT PARK THROUGHOUT THE YEAR. THE AREA OF CONCERN IS FROM RIVER ROAD TO BINGHAM WAY. WHEN SUCH ACTIVITIES DO OCCUR, NO WORK WILL BE ALLOWED TO BE PERFORMED DURING THE EVENT'S TIME FRAME AND ANY STAGING THAT MAY BE NEEDED FOR THE EVENT. CONTRACTOR SHALL REMOVE ALL EQUIPMENT, ETC., 24 HOURS PRIOR TO THE EVENT BEGINNING. COORDINATE WITH WATERFRONT PARK, LOUISVILLE METRO AND OTHER GROUPS ACCORDINGLY.
16. LIMIT THE LENGTHS OF LANE CLOSURES TO ONLY THAT NEEDED FOR ACTUAL OPERATIONS OR AS DIRECTED BY THE ENGINEER. CONTRARY TO SECTION 112. LANE CLOSURES WILL NOT BE MEASURED FOR PAYMENT, BUT ARE CONSIDERED INCIDENTAL TO MAINTAIN AND CONTROL TRAFFIC. OTHER THAN THE HOLIDAYS LISTED IN THE CURRENT STANDARD SPECIFICATIONS, THE ENGINEER MAY SPECIFY ADDITIONAL DAYS AND HOURS WHEN LANE CLOSURES ARE NOT ALLOWED. DO NOT LEAVE LANE CLOSURES IN PLACE DURING PROHIBITED PERIODS.

PUBLIC INFORMATION PLAN (PIP)

KYTC DISTRICT 5 PUBLIC INFORMATION OFFICER (PIO) WILL INFORM THE MOTORING PUBLIC AND AREA STAKEHOLDERS OF PROJECT INFORMATION INCLUDING MAINTENANCE OF TRAFFIC, THE DISTRICT PUBLIC INFORMATION OFFICER WILL COORDINATE AND DISSEMINATE TO STAKEHOLDERS AND THE MEDIA APPROPRIATE INFORMATION REGARDING THE CONSTRUCTION.

ADVANCED NOTICE OF WORK

THE CONTRACTOR SHALL GIVE THE ENGINEER 14 DAYS ADVANCE NOTICE OF ANY WORK AFFECTING TRAFFIC ON I-64.

CONTRACTOR VEHICLES

THE CONTRACTOR'S VEHICLES SHALL ALWAYS MOVE WITH AND NOT AGAINST THE FLOW OF TRAFFIC. VEHICLES SHALL ENTER AND LEAVE THE WORK AREAS IN A MANNER WHICH WILL NOT BE HAZARDOUS TO OR INTERFERE WITH NORMAL TRAFFIC.

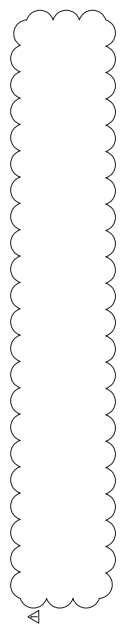
WEEKNIGHT CLOSURE

A WEEKNIGHT CLOSURE SHALL BE DESCRIBED AS THE PERIOD FROM 8:00 PM UNTIL 5:00 AM THE FOLLOWING MORNING.

RIVER ROAD LANE CLOSURES FOR DRAINAGE AND OTHER MISC. BRIDGE WORK

BETWEEN PIERS 130A AND 136 AND BETWEEN PIERS 137W AND 137W. REFER TO KYTC STANDARD DRAWING NOS. TTC-115-04 AND TTC-140-04 AND MUTCD TYPICAL APPLICATION NUMBERS 22, 23, 24 AND 30 FOR GUIDANCE AND OPTIONAL LANE CLOSURE METHODS. ONE LANE MINIMUM IN EACH DIRECTION SHALL BE MAINTAINED AT ALL TIMES. IF SIDEWALK CLOSURE IS NECESSARY, PROVIDE SAFE ACCESS. SEE MUTCD TYPICAL APPLICATION 28 FOR GUIDANCE.

FROM BINGHAM WAY TO FOURTH STREET, REFER TO KYTC STANDARD DRAWING NO. TTC-115-04 AND MUTCD TYPICAL APPLICATION NUMBERS 22, 23 AND 30 FOR GUIDANCE AND OPTIONAL LANE CLOSURE METHODS. PROVIDE ACCESS AT ALL TIMES TO LOCAL STREETS, BUSINESS ENTRANCES, PARKING LOTS, ETC. PROVIDE FLAGGERS WHEN NEEDED. FOR SIDEWALK CLOSURES, REFER TO MUTCD APPLICATION NUMBERS 28 AND 29.

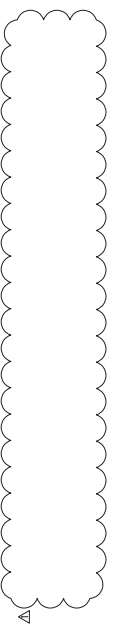


NORTH 27TH STREET LANE CLOSURE FOR DRAINAGE WORK

FOR WORK ON BRIDGE #283 AT NORTH 27TH STREET, REFER TO KYTC STANDARD DRAWING NO. TTC-100-05 AND MUTCD TYPICAL APPLICATION NUMBER 10 FOR GUIDANCE ON LANE CLOSURE. PROVIDE ACCESS AT ALL TIMES TO LOCAL STREETS, BUSINESS ENTRANCES, PARKING LOTS, ETC.

I-64 LANE CLOSURES

IF NEEDED FOR CLEANING OF EXISTING BRIDGE DRAIN INLETS, LANE CLOSURE SHALL BE PER KYTC STANDARD DRAWING NO. TTC-115-04 AND PER MUTCD TYPICAL APPLICATION NUMBERS 42 AND 44. THIS WORK SHALL BE DONE AS A WEEKNIGHT CLOSURE ONLY. ALL ITEMS OF WORK NECESSARY TO MAINTAIN AND CONTROL TRAFFIC WILL BE PAID AT THE LUMP-SUM BID PRICE TO MAINTAIN AND CONTROL TRAFFIC.



PROPOSAL REVISION	DATE
REVISION	05/05/21
RIVERSIDE PARKWAY MAINTENANCE OF TRAFFIC GENERAL NOTES	

MATERIAL SUMMARY

CONTRACT ID: 212603

056GR21M056-FJ11

MB05600642101

I-64 (MP 4.988) - 3RD TO PRESTON ST . BRIDGE OVER KY 3077 BRIDGE REPAIR MISCELLANEOUS WORK.

Project Line No	Bid Code	DESCRIPTION	Quantity	Unit
0005	02483	CHANNEL LINING CLASS II	1.00	TON
0010	02568	MOBILIZATION	1.00	LS
0015	02603	FABRIC-GEOTEXTILE CLASS 2	37.00	SQYD
0020	02650	MAINTAIN & CONTROL TRAFFIC - APPLIES TO 056B00142N	1.00	LS
0025	05963	INITIAL FERTILIZER	1.00	TON
0030	05985	SEEDING AND PROTECTION	2,200.00	SQYD
0035	21679EN	FIBERGLASS DRAIN PIPE - 8 IN	4,914.00	LF
0040	22146EN	CONCRETE PATCHING REPAIR - (REVISED: 5-7-21)	660.00	SQFT
0045	23055N	REMOVE - DRAINAGE	1.00	LS
0050	02569	DEMOBILIZATION	1.00	LS

CONTRACT ID: 212603

056GR21M056-FJ11

MB05600642102

I-64 (MP 2.111) - K & IT RR & 27TH ST. BRIDGE OVER K& IT RR AND 27TH ST BRIDGE REPAIR MISCELLANEOUS WORK.

Project Line No	Bid Code	DESCRIPTION	Quantity	Unit
0055	02483	CHANNEL LINING CLASS II	1.00	TON
0060	02568	MOBILIZATION	1.00	LS
0065	02603	FABRIC-GEOTEXTILE CLASS 2	46.00	SQYD
0070	02607	FABRIC-GEOTEXTILE CLASS 2 FOR PIPE	122.00	SQYD
0075	02650	MAINTAIN & CONTROL TRAFFIC - APPLIES TO 056B00283N	1.00	LS
0080	02701	TEMP SILT FENCE	700.00	LF
0085	02703	SILT TRAP TYPE A	2.00	EACH
0090	02706	CLEAN SILT TRAP TYPE A	2.00	EACH
0095	08014	REINF CONC SLOPE WALL-4 IN	27.00	SQYD
0100	21679EN	FIBERGLASS DRAIN PIPE - 8 IN	715.00	LF
0105	23055N	REMOVE - DRAINAGE	1.00	LS
0110	02569	DEMOBILIZATION	1.00	LS

MATERIAL SUMMARY

CONTRACT ID: 212603

056GR21M056-FJ11

MB05600642103

I-64 (MP 1.639) - K & IT RR TRESTLE. BRIDGE OVER K& IT RR TRESTLE BRIDGE REPAIR MISCELLANEOUS WORK.

Project Line No	Bid Code	DESCRIPTION	Quantity	Unit
0115	02483	CHANNEL LINING CLASS II	5.00	TON
0120	02568	MOBILIZATION	1.00	LS
0125	02603	FABRIC-GEOTEXTILE CLASS 2	181.00	SQYD
0130	02607	FABRIC-GEOTEXTILE CLASS 2 FOR PIPE	291.00	SQYD
0135	02650	MAINTAIN & CONTROL TRAFFIC - APPLIES TO 056B00284N	1.00	LS
0140	02701	TEMP SILT FENCE	900.00	LF
0145	02703	SILT TRAP TYPE A	2.00	EACH
0150	02706	CLEAN SILT TRAP TYPE A	2.00	EACH
0155	08014	REINF CONC SLOPE WALL-4 IN	63.00	SQYD
0160	21679EN	FIBERGLASS DRAIN PIPE - 8 IN	2,106.00	LF
0165	23055N	REMOVE - DRAINAGE	1.00	LS
0170	02569	DEMOBILIZATION	1.00	LS

PROPOSAL BID ITEMS

212603

Page 1 of 1

Report Date 5/7/21

Section: 0001 - BRIDGE

LINE	BID CODE	ALT	DESCRIPTION	QUANTITY	UNIT	UNIT PRIC	FP	AMOUNT
0010	02483		CHANNEL LINING CLASS II	7.00	TON		\$	
0020	02568		MOBILIZATION	1.00	LS		\$	
0030	02603		FABRIC-GEOTEXTILE CLASS 2	264.00	SQYD		\$	
0040	02607		FABRIC-GEOTEXTILE CLASS 2 FOR PIPE	413.00	SQYD	\$2.00	\$	\$826.00
0050	02650		MAINTAIN & CONTROL TRAFFIC APPLIES TO 056B00142N	1.00	LS		\$	
0060	02650		MAINTAIN & CONTROL TRAFFIC APPLIES TO 056B00283N	1.00	LS		\$	
0070	02650		MAINTAIN & CONTROL TRAFFIC APPLIES TO 056B00284N	1.00	LS		\$	
0080	02701		TEMP SILT FENCE	1,600.00	LF		\$	
0090	02703		SILT TRAP TYPE A	4.00	EACH		\$	
0100	02706		CLEAN SILT TRAP TYPE A	4.00	EACH		\$	
0110	05963		INITIAL FERTILIZER	1.00	TON		\$	
0120	05985		SEEDING AND PROTECTION	2,200.00	SQYD		\$	
0130	08014		REINF CONC SLOPE WALL-4 IN	90.00	SQYD		\$	
0140	21679EN		FIBERGLASS DRAIN PIPE 8 IN	7,735.00	LF		\$	
0150	22146EN		CONCRETE PATCHING REPAIR (REVISED: 5-7-21)	660.00	SQFT		\$	
0160	23055N		REMOVE DRAINAGE	1.00	LS		\$	

Section: 0002 - DEMOBILIZATION

LINE	BID CODE	ALT	DESCRIPTION	QUANTITY	UNIT	UNIT PRIC	FP	AMOUNT
0170	02569		DEMOBILIZATION	1.00	LS		\$	